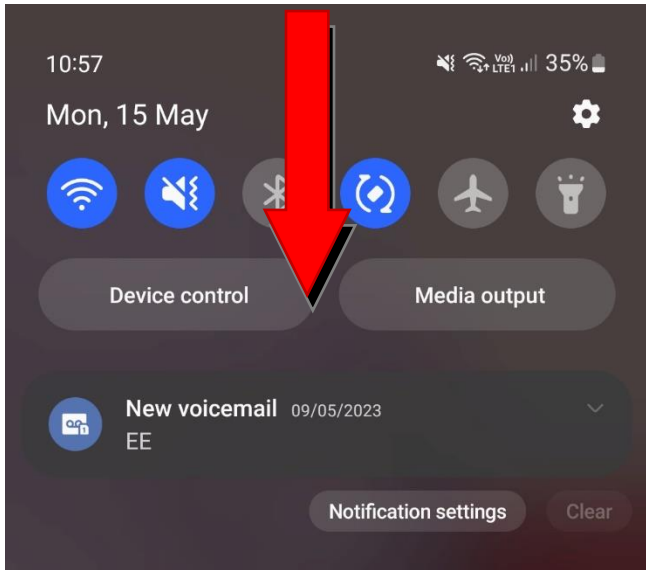
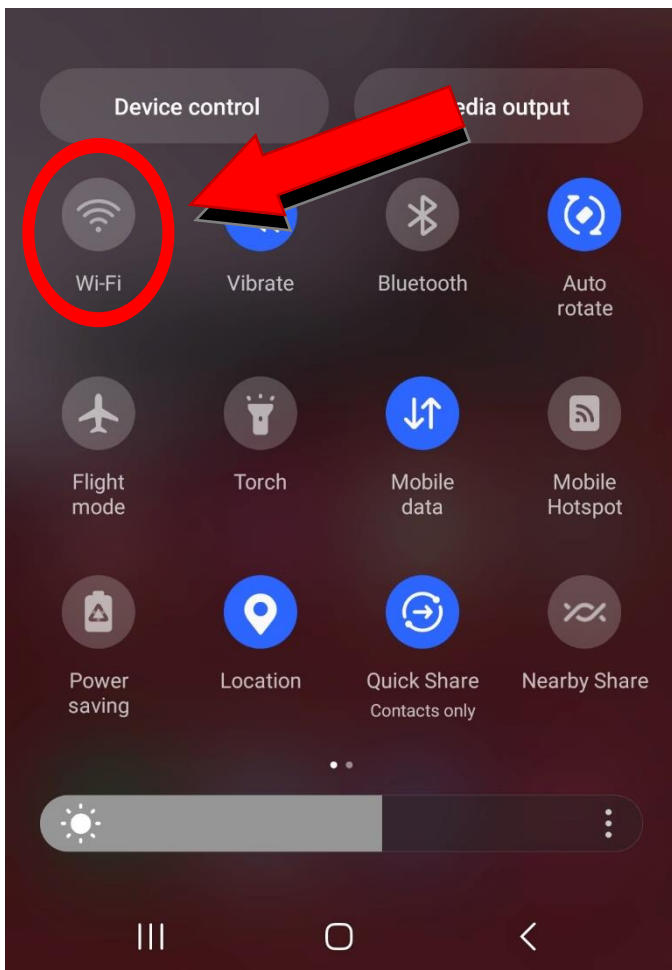


Connecting to the Internet on Mobile

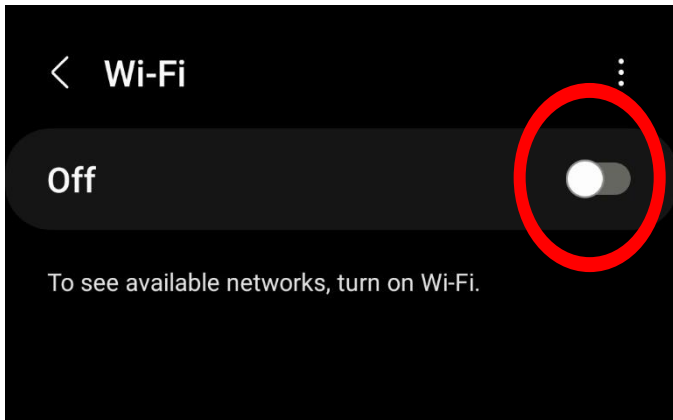


Start by swiping down from the top of your device screen, and then swipe the menu down **again** to expand it.

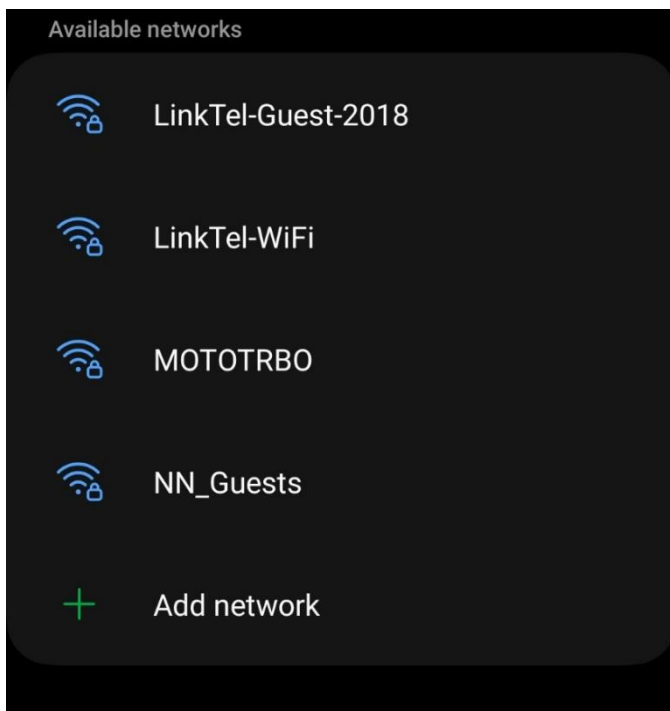


With the expanded menu open, look for the **first** icon, **Wi-Fi**, it looks a bit like a **tornado**. It will either be grey or blue, depending if it was already turned on, but this **does not matter**.

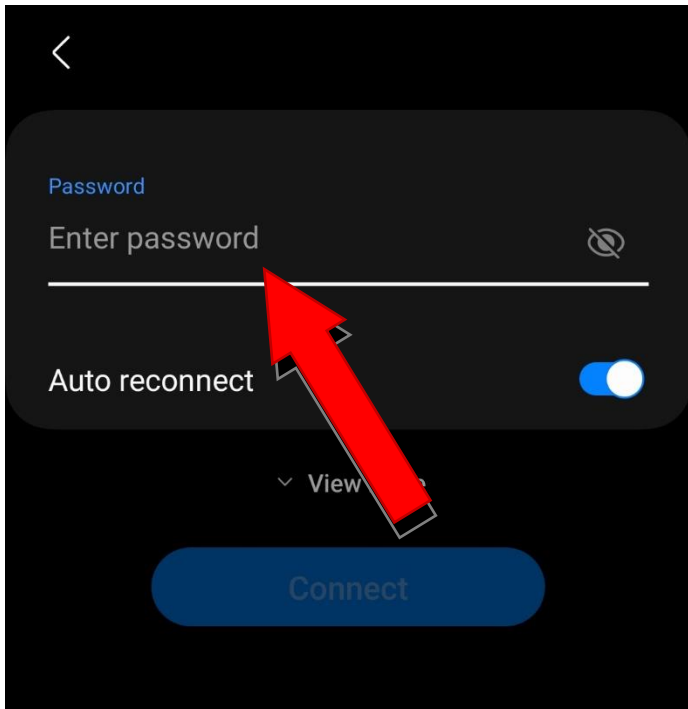
Tap and hold on the icon to proceed to the Wi-Fi menu.



Make sure your Wi-Fi is set to **On, or Blue**, before you continue. Tap the toggle button on the right to change it if you need to.

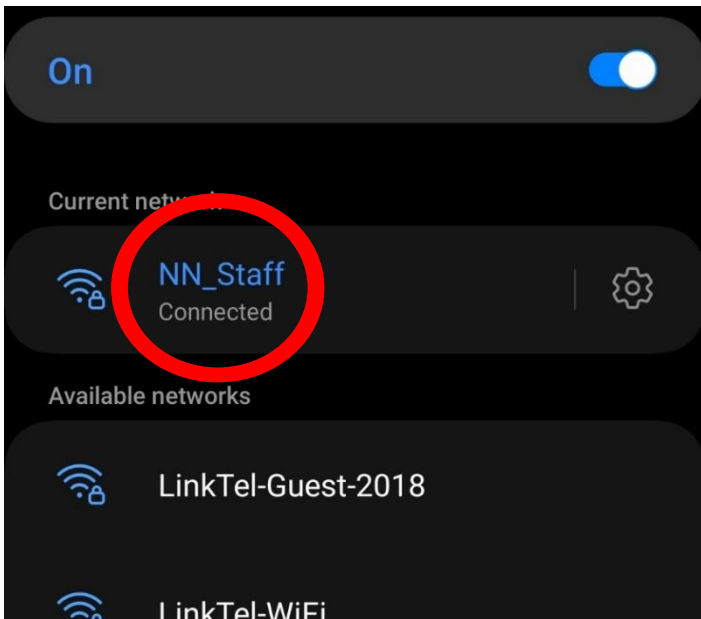


When your Wi-Fi is on, you will see a list of networks you can connect to. Check the **back, sides, and underside of your router** to find the network name and password, or ask someone who knows.



Tap on the name that **matches the name of your network**. Then, type in the password from your router into the box provided.

Leave the **Auto reconnect** option as blue if this is your own network. Your device will connect automatically in future.



Once you have pressed the blue **Connect** button, check that the network says **“Connected”**. If it does, you are good to go.