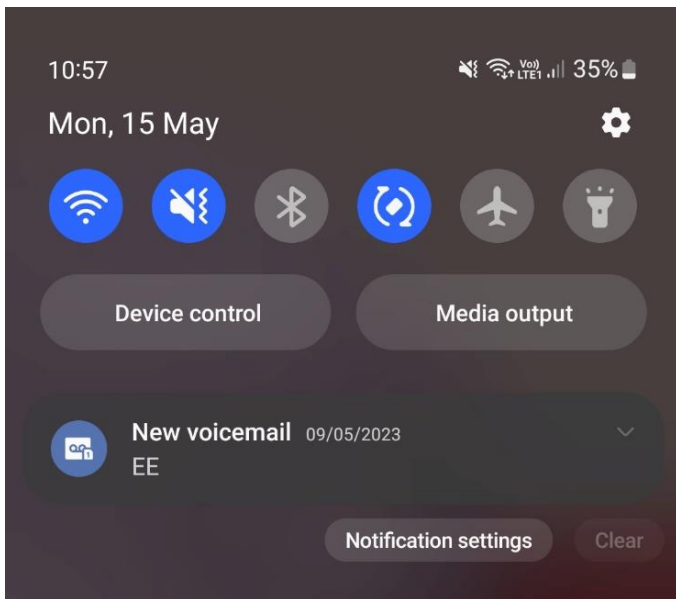
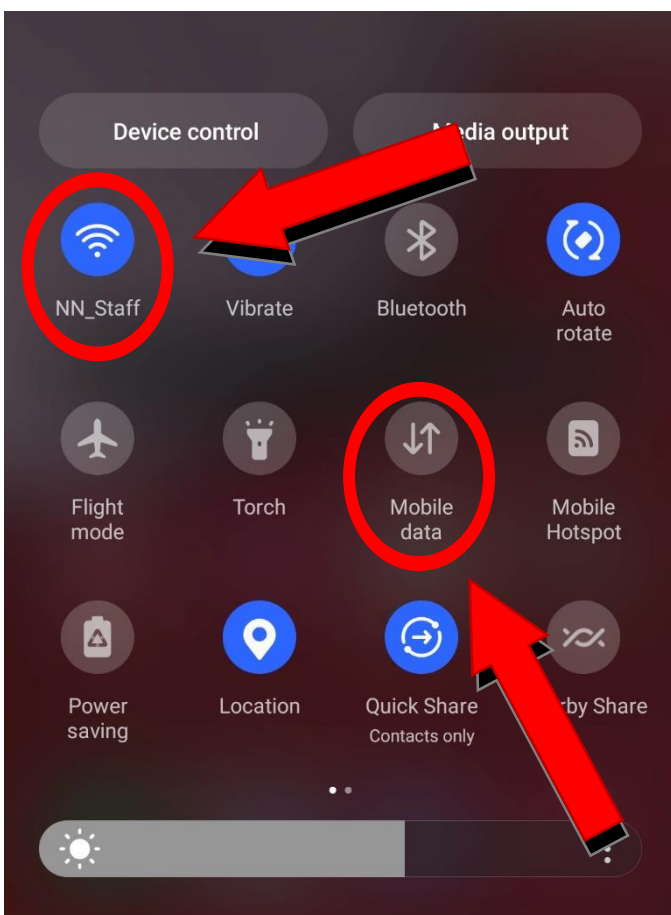


# C

# Switch between WiFi and Mobile Data

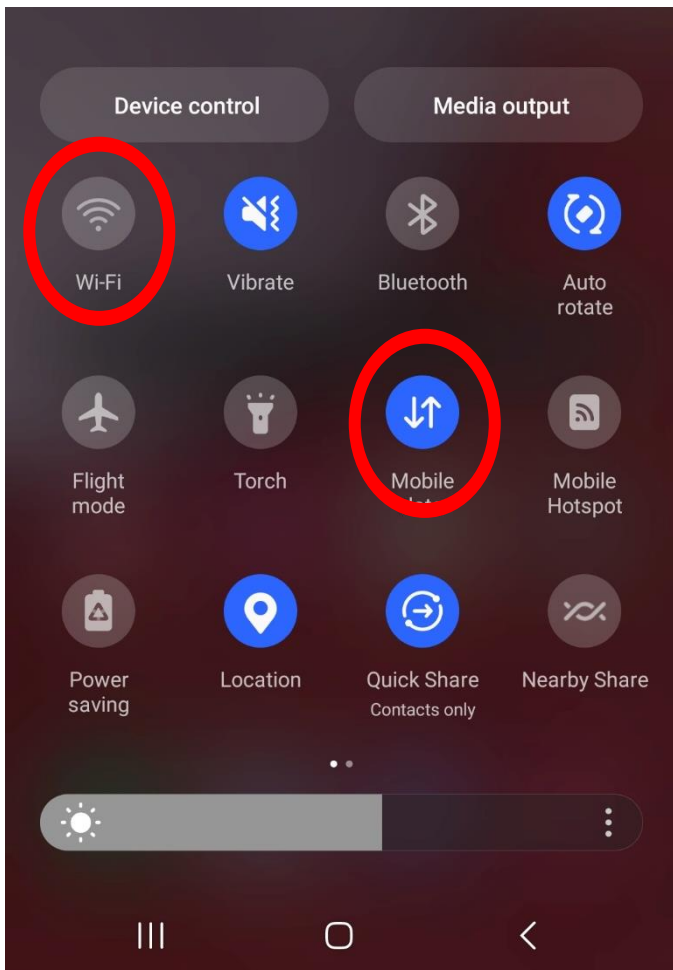


Start by swiping down from the top of your device screen, and then swipe the menu down **again** to expand it.



With the expanded menu open, look for the **first** icon, **Wi-Fi**, it looks a bit like a **tornado**. It will be **blue** if it is switched **on**, or **grey** if it is **off**.

The same applies to the **mobile data** icon, which is **2 arrows**, one pointing down and the other, up.



You can turn these both on and off just by **tapping** them once.

To avoid connecting to public Wi-Fi, when you are out and about, your **mobile data** should be **on**, and Wi-Fi should be **off**.

You can switch them around when back in your own house.

Keeping your mobile data **off** when at home will help you preserve it for when you're out and about.